



## Connect Your Laptop to the UCSB Libraries' Network!

### Before You Begin, Please Note:

- **CAUTION: Wireless connections are not secure. If you need a secure connection, please use the open ports or the library user workstations.**
- Users are responsible for configuring their own hardware and software.
- Read the "You Must Have" and "Getting Started" sections below before proceeding to the setup instructions (reverse side).

### You Must Have:

- Your own laptop computer with Internet browser software installed
- A wireless adapter with TCP IP installed. The adapter must support 802.11a, 802.11b, or 802.11g.
- UCSBnetID and password\*

### Getting Started:

- Before connecting to the network, you may need to reconfigure your network settings to use DHCP (follow the instructions on the reverse side).
- **CAUTION: If you are using networks at other locations, make notes of your existing settings before making changes and move them to "Alternate Configuration".**
- Once you are configured to use DHCP, connect to the network by opening your browser software. You will automatically be directed to the log-on page.
- Log on using your UCSBnetID and password\*.

### Trouble Shooting Tips:

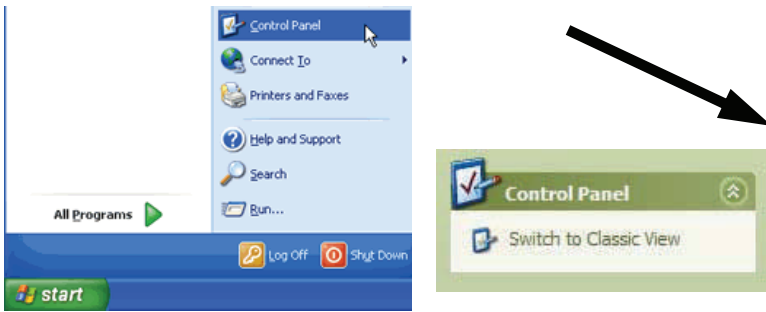
- Be sure that you are connecting to the UCSB wireless network.
- You may need to restart your computer after changing the settings.
- Didn't find any networking options? You will need to install the networking options from the operating system software that came with your laptop. Verify that the wireless adapter is visible in your network connections. You might need to eject the card and reinsert it.
- Your wireless adapter may not be functioning properly – seek advice from your normal computer service.
- NOTE: This service may not work with every laptop computer.

**We cannot help you with hardware and software problems. If your laptop is unable to use the network after following these instructions, please seek assistance from your normal computer service.**

\* Students: U-Mail ID; Faculty/Staff: ID used for E-Grades or CorporateTime.

# Windows XP

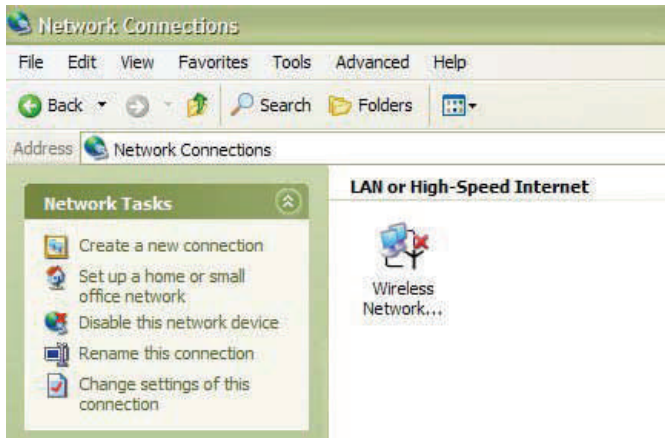
1. From the **Start** menu, select **Control Panel**. Switch to **Classic View** if you are using Category View.



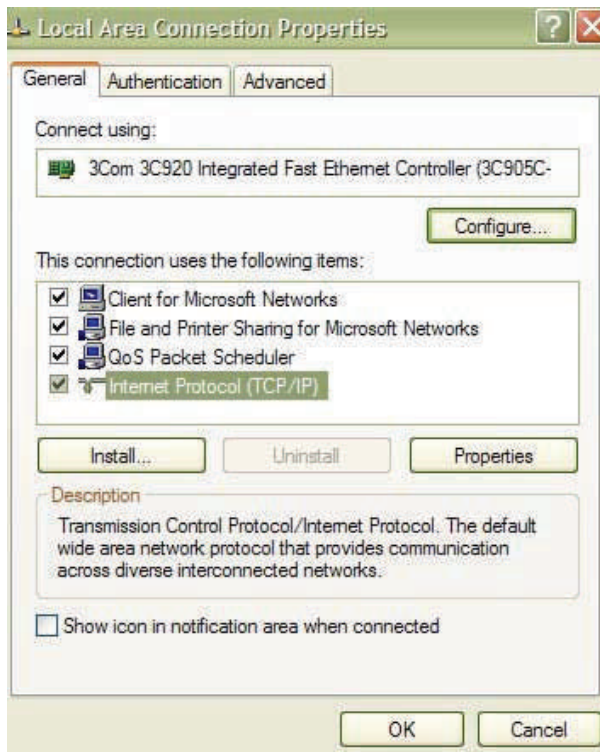
2. Double click on **Network Connections**.



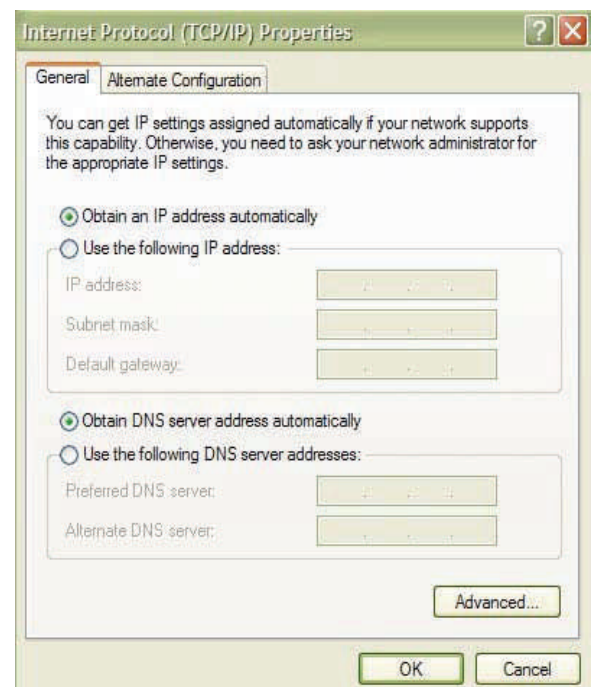
3. Double click on **Wireless Network Connection** and select **Properties**.



4. Select **Internet Protocol (TCP/IP)** and click **Properties**.



5. Select **Obtain an IP address automatically** and **Obtain DNS server address automatically**. Move preexisting settings to **Alternate Configuration** before doing this.



6. Click **OK** to close the **TCP/IP Properties** window. Close all remaining windows.