



# Windows 2000

## Connect Your Laptop to the UCSB Libraries' Network!

### Before You Begin, Please Note:

- **CAUTION:** Wireless connections are not secure. If you need a secure connection, please use the open ports or the library user workstations.
- This is an experimental service. Users are responsible for configuring their own hardware and software.
- There are no printers connected to this network.
- Read the "You Must Have" and "Getting Started" sections below before proceeding to the setup instructions (reverse side).

### You Must Have:

- Your own laptop computer with Internet browser software installed
- A wireless adapter with TCP IP installed. The adapter must support 802.11a, 802.11b, or 802.11g.
- UCSBnetID and password\*

### Getting Started:

- Before connecting to the network, you may need to reconfigure your network settings to use DHCP (follow the instructions on the reverse side).
- **CAUTION:** If you are using networks at other locations, make notes of your existing settings before making changes.
- Once you are configured to use DHCP, connect to the network by opening your browser software. You will automatically be directed to the log-on page.
- Log on using your UCSBnetID and password\*.

### Trouble Shooting Tips:

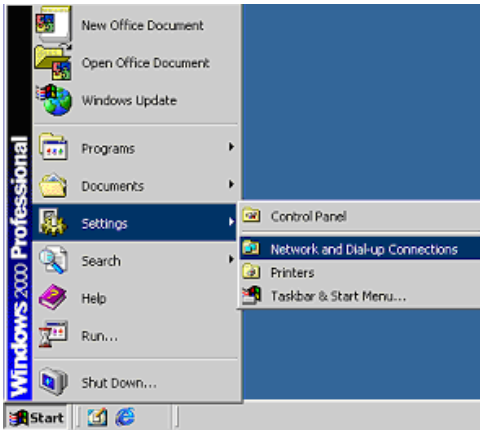
- Did you restart your computer after changing the settings?
- Didn't find any networking options? You will need to install the networking options from the operating system software that came with your laptop. Verify that the wireless adapter is visible in your network connections. You might need to eject the card and reinsert it.
- Your wireless adapter may not be functioning properly – seek advice from your normal computer service.
- NOTE: This service may not work with every laptop computer.

**We cannot help you with hardware and software problems. If your laptop is unable to use the network after following these instructions, please seek assistance from your normal computer service.**

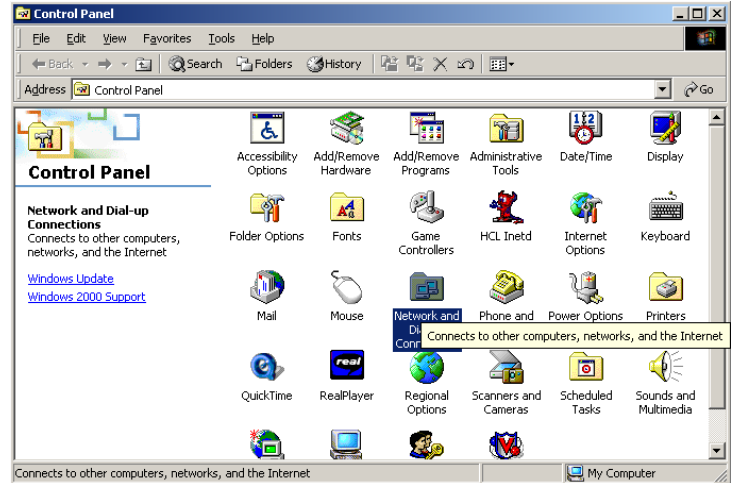
\*Students: U-Mail ID; Faculty/Staff: UCSB Directory ID or CorporateTime ID.

# Windows 2000

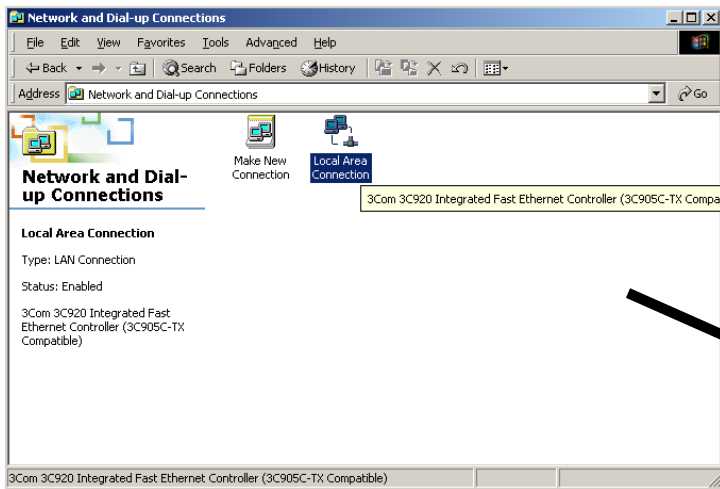
1. Login to Windows 2000 Professional as Administrator. Go to the **Start** button. Select **Settings** and then click on **Control Panel**.



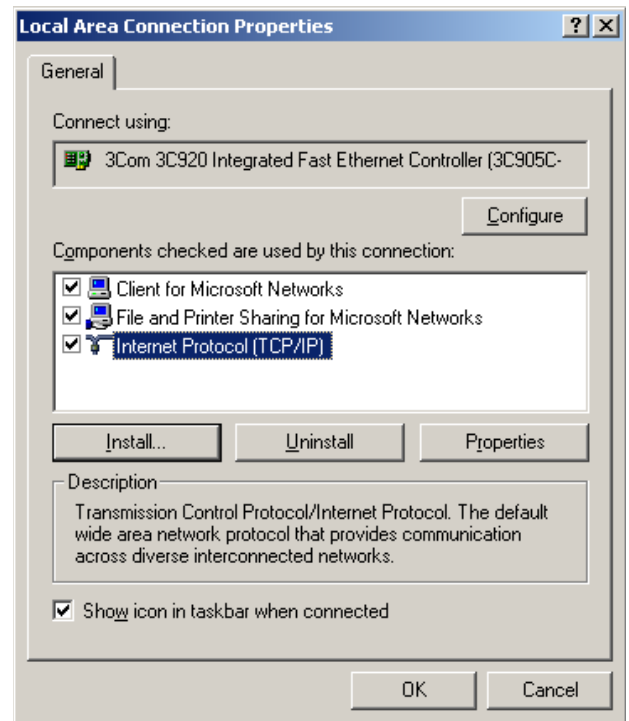
2. Double-Click on **Network and Dial-up Connections** in the Control Panel.



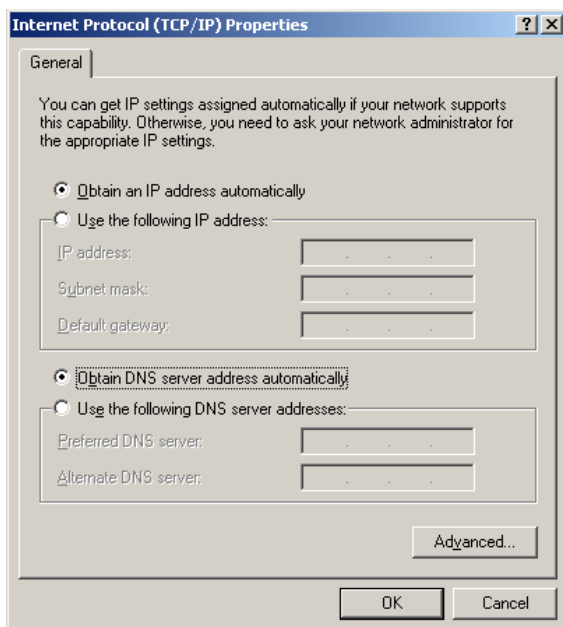
3. Double click once on **Local Area Connection**.



4. Select **Internet Protocol (TCP/IP)**, then **Properties**.



5. Select '**Obtain an IP address automatically**' and '**Obtain a DNS server address automatically**'.



6. Answer **OK** on all screens until the network properties boxes are closed. It is recommended that you restart your computer when finished.